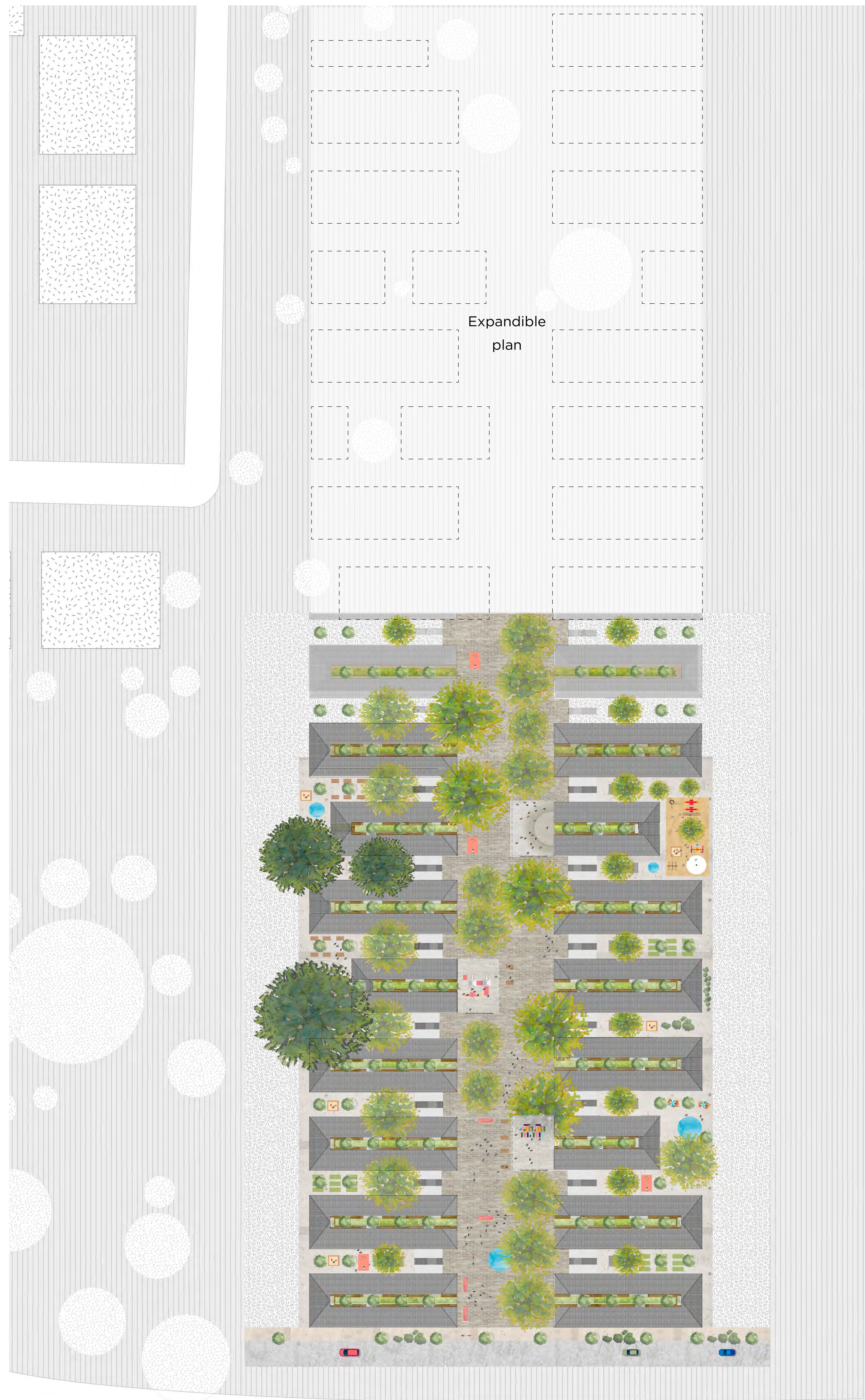
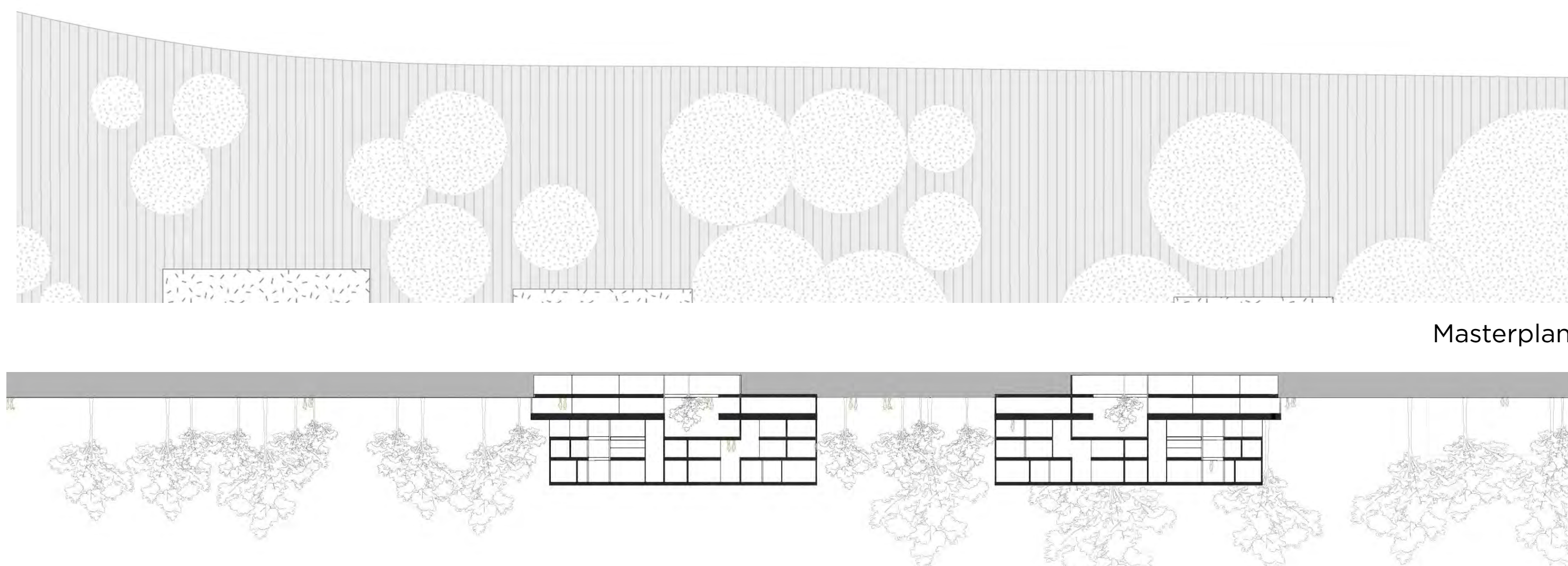




East Façade

Expandible
plan

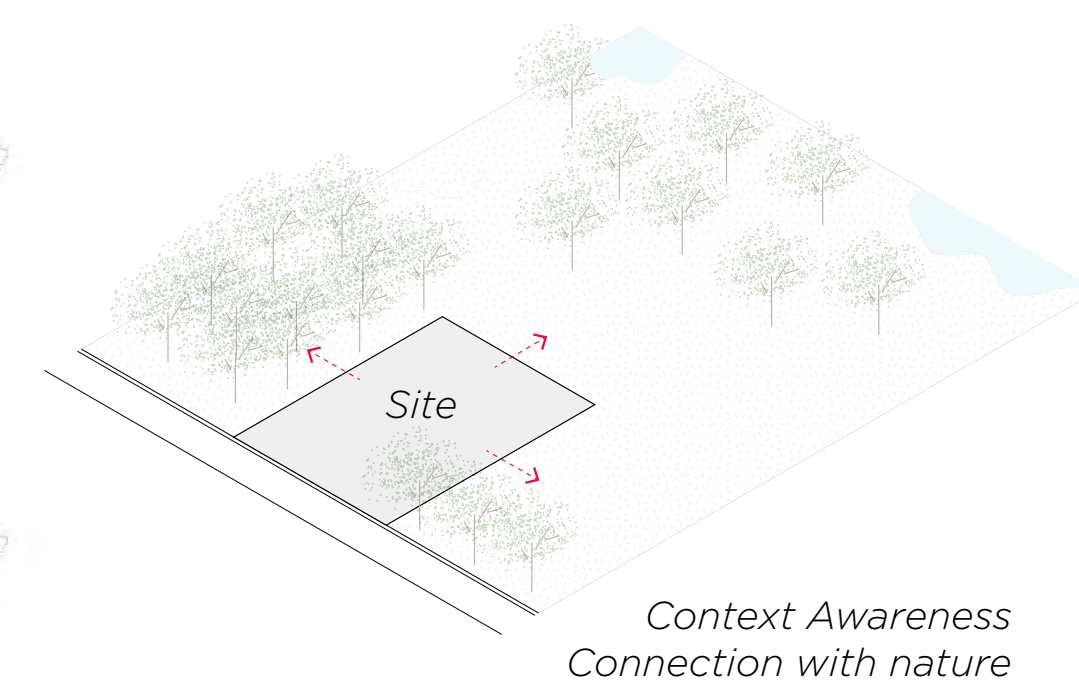
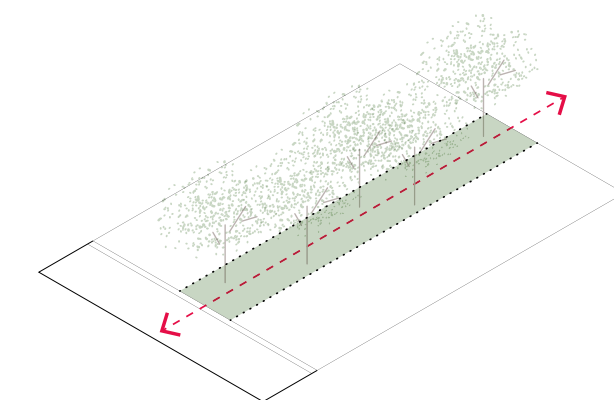
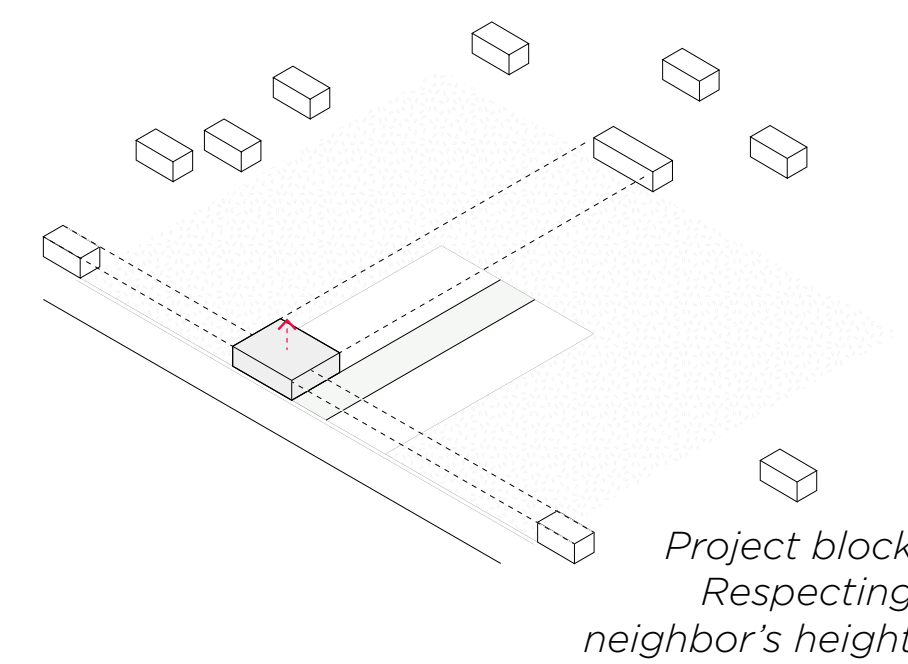
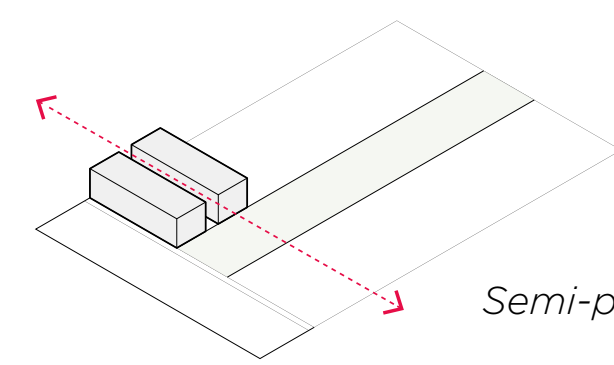
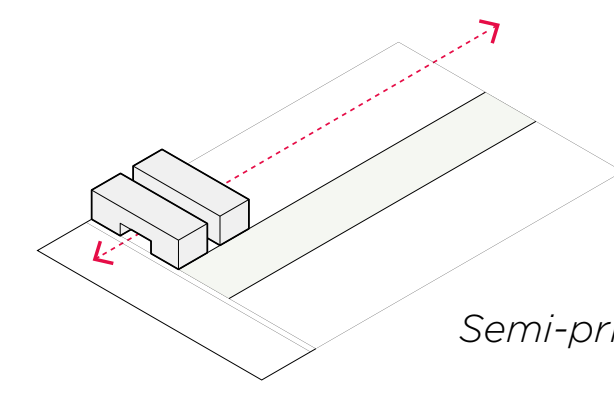
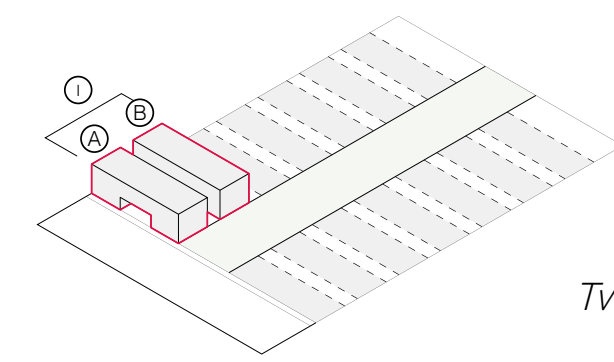
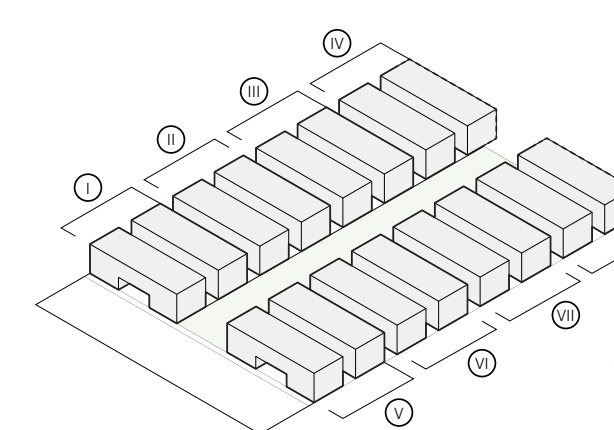
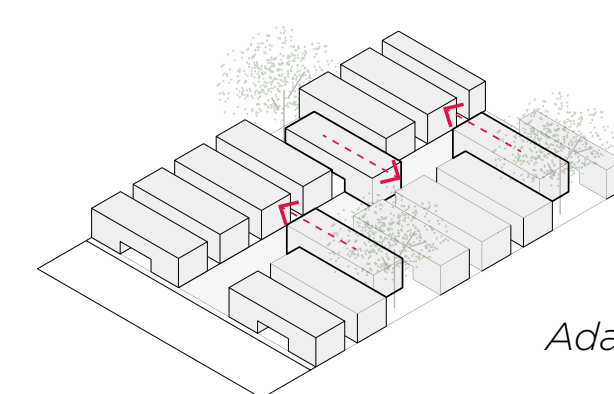
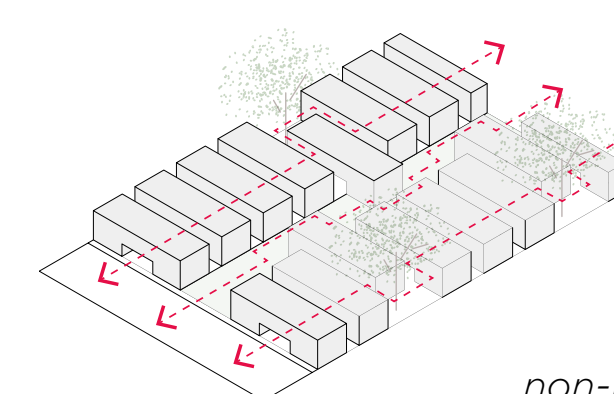
Cross-Section

Lengthwise
Section

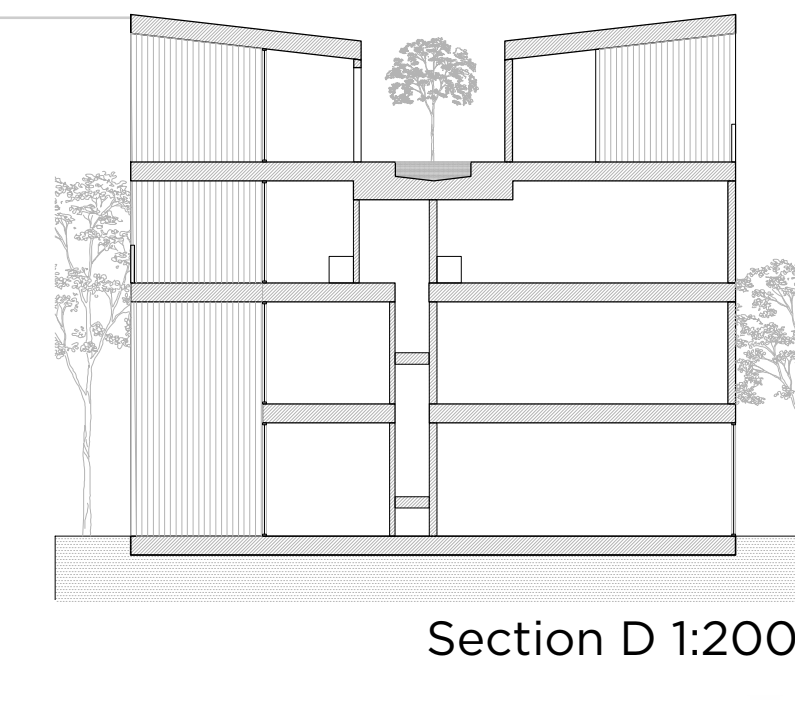
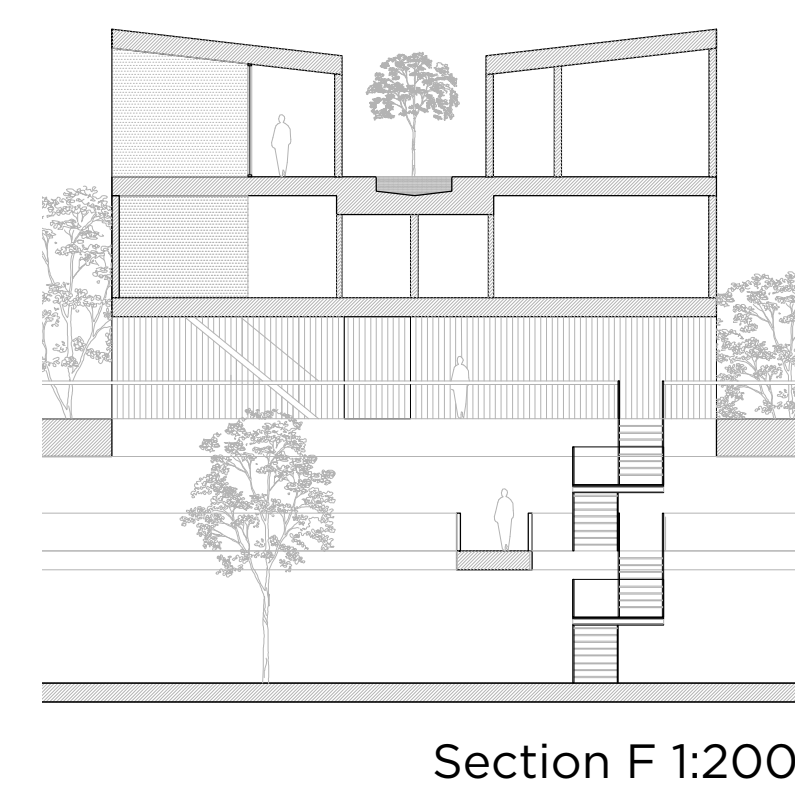
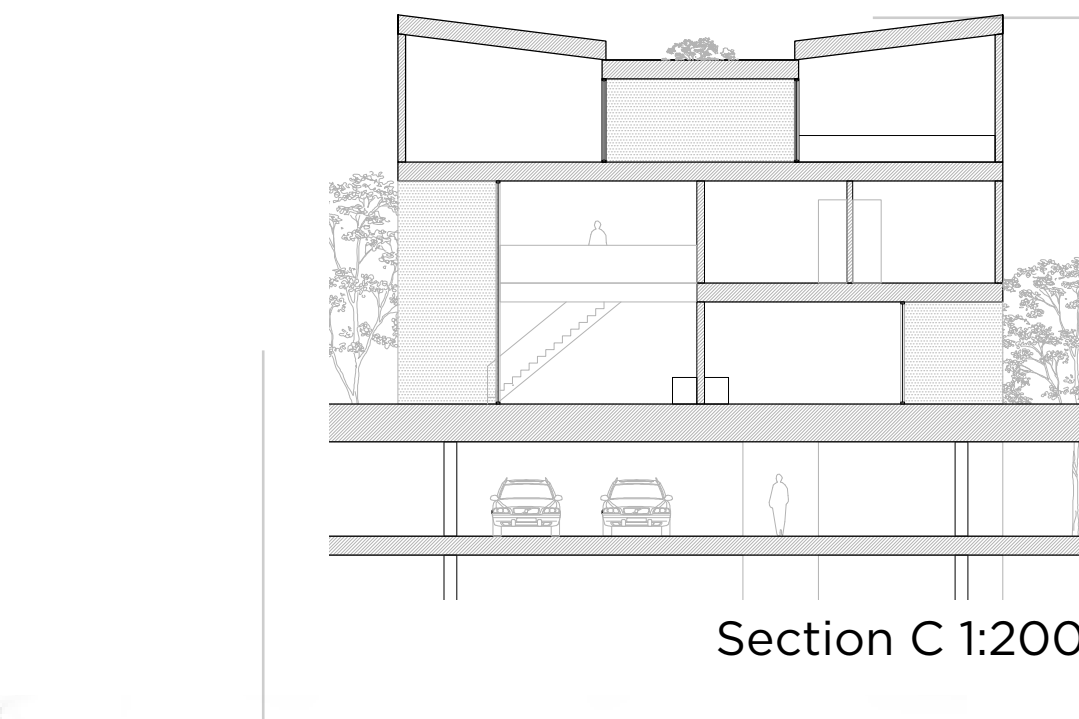
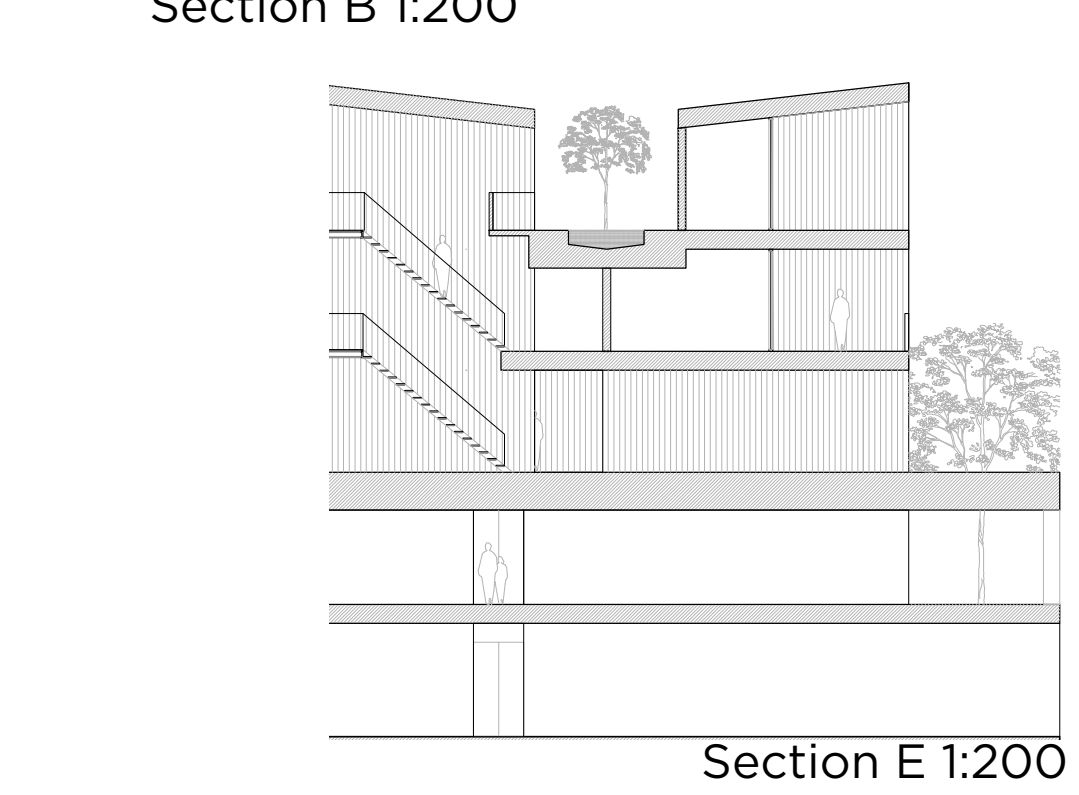
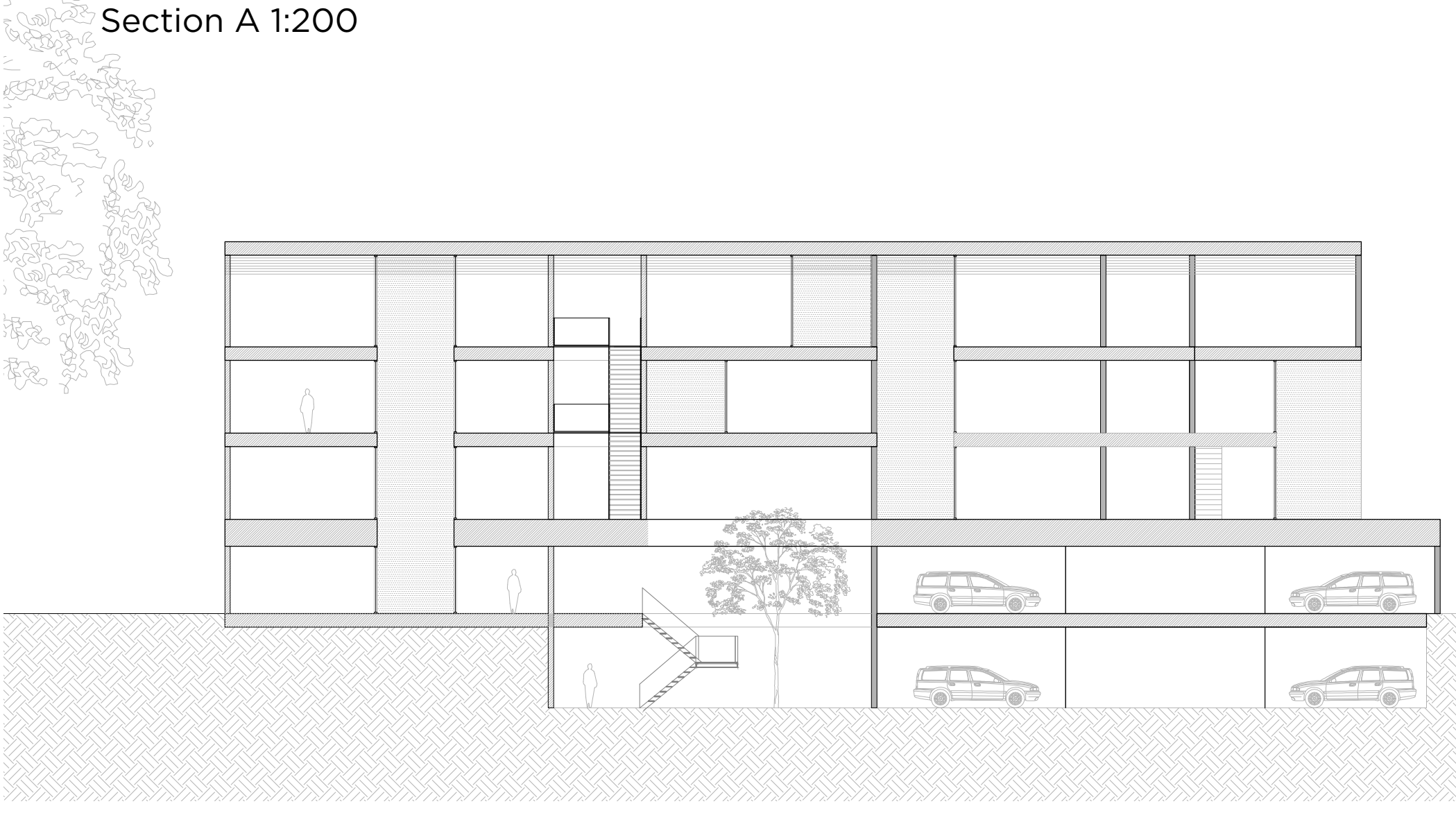
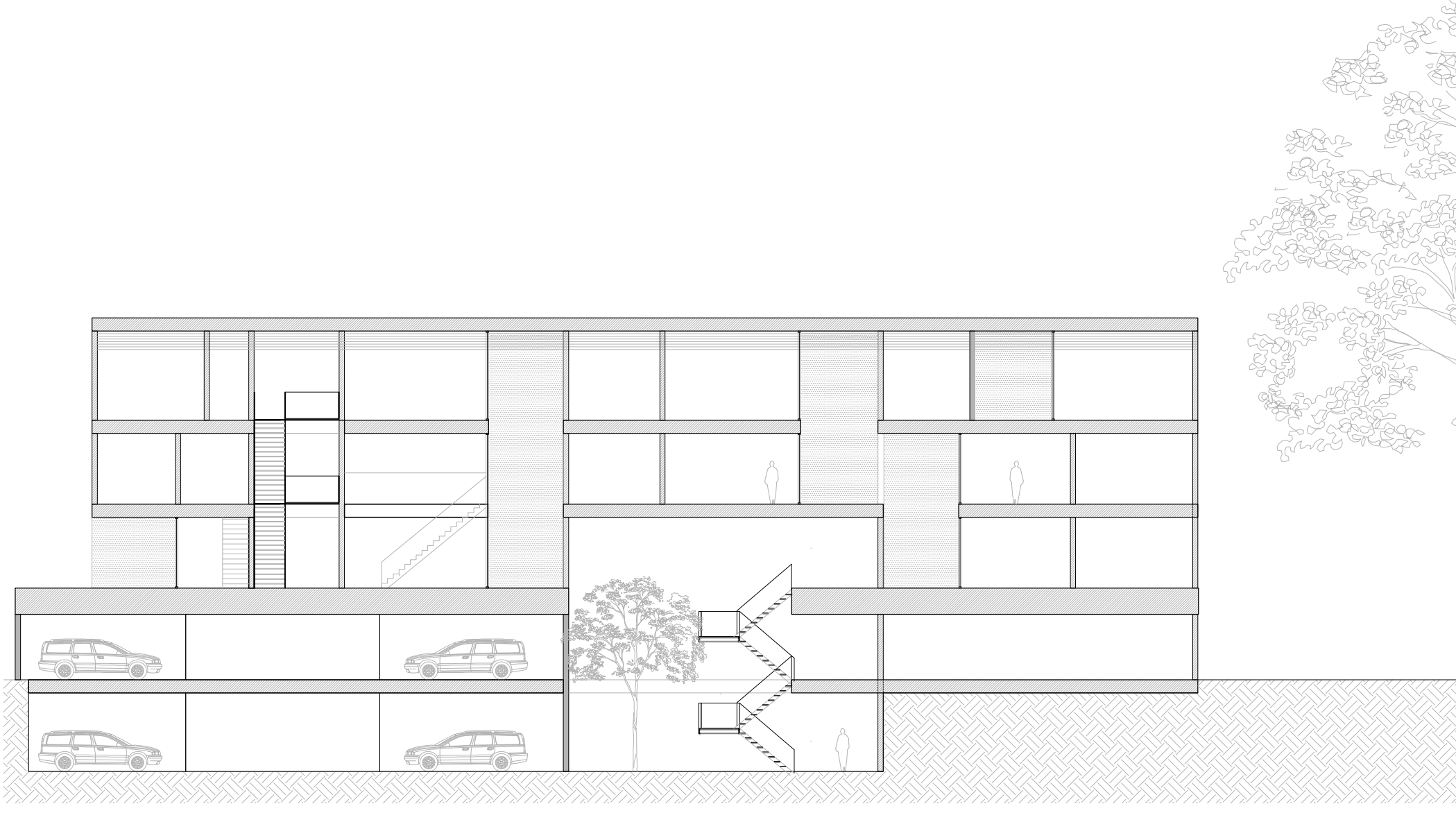
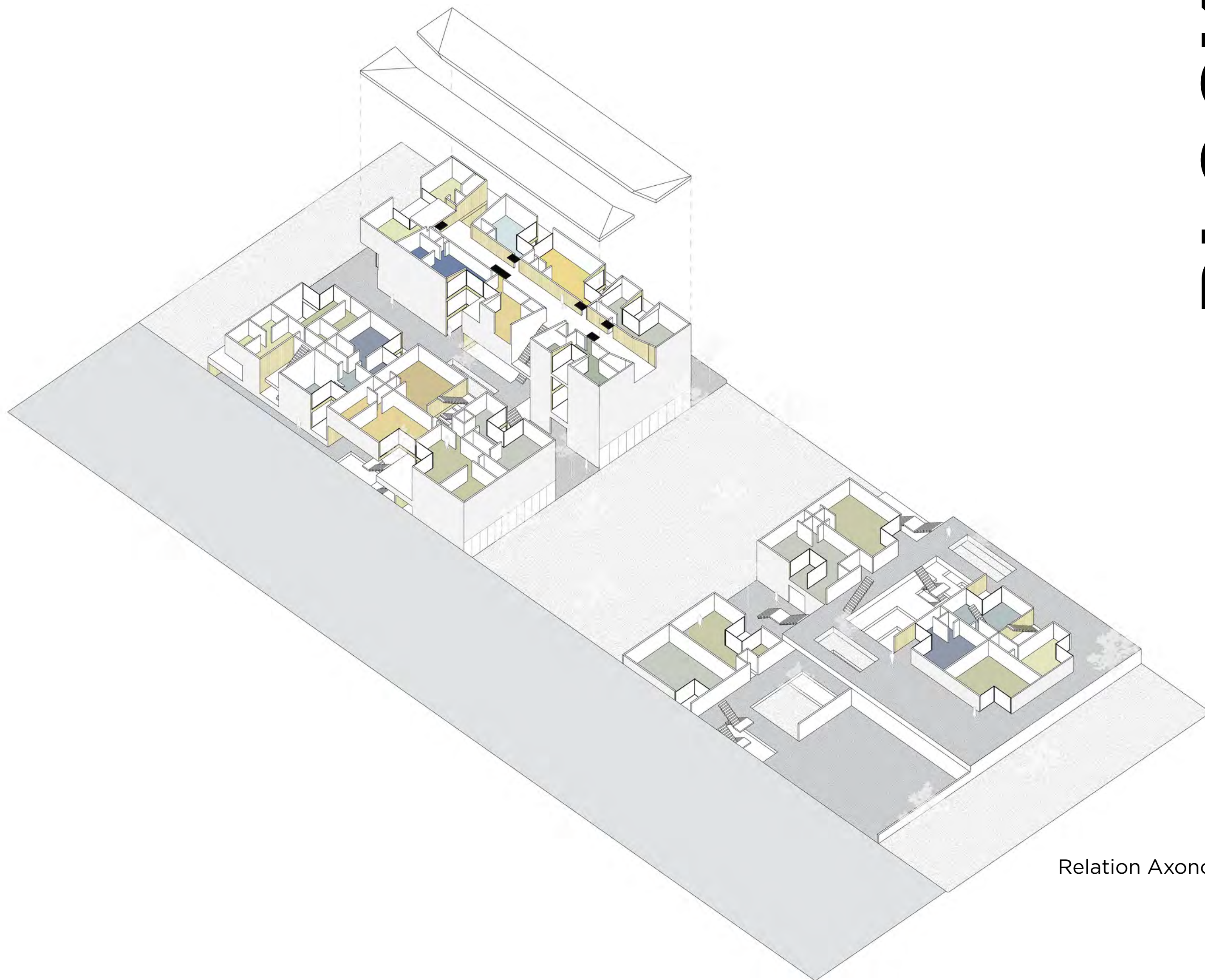
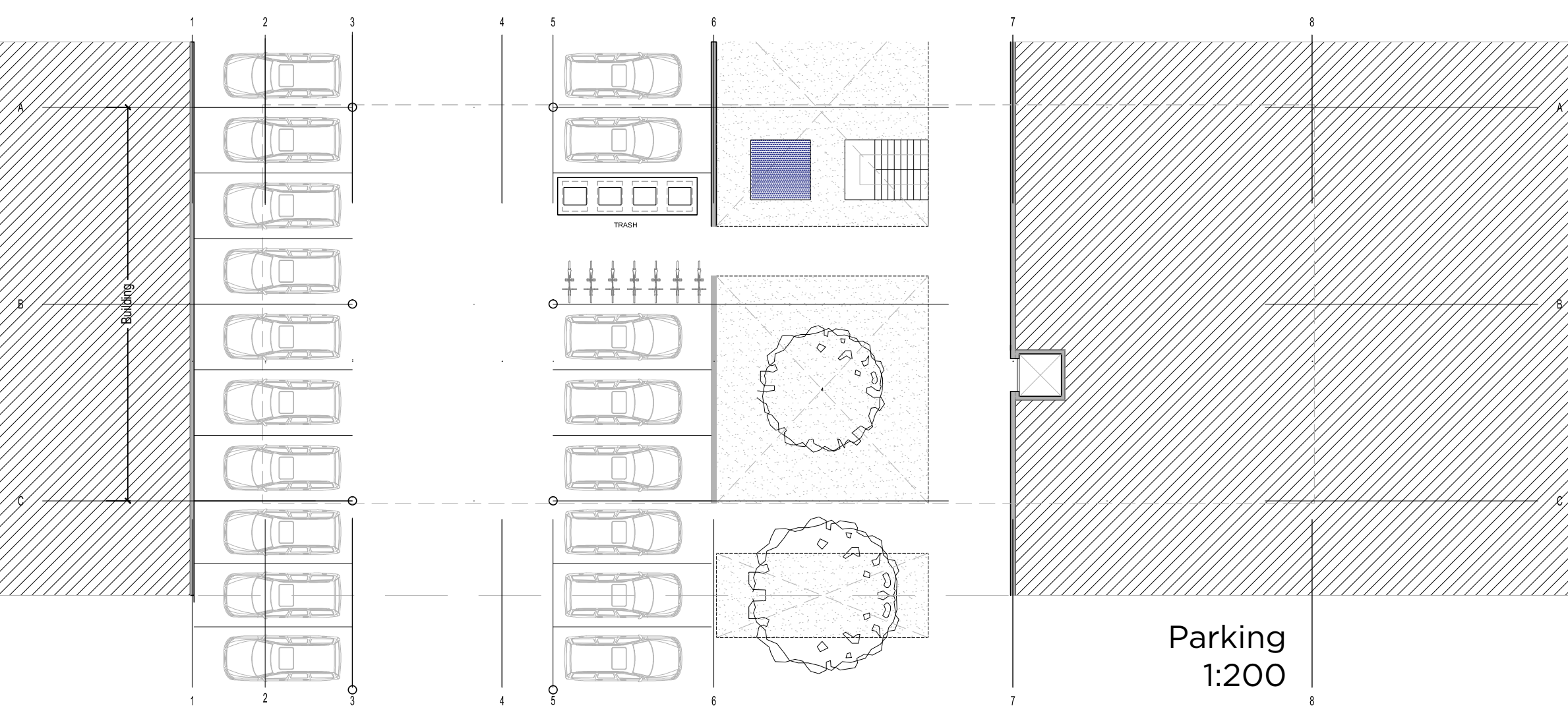
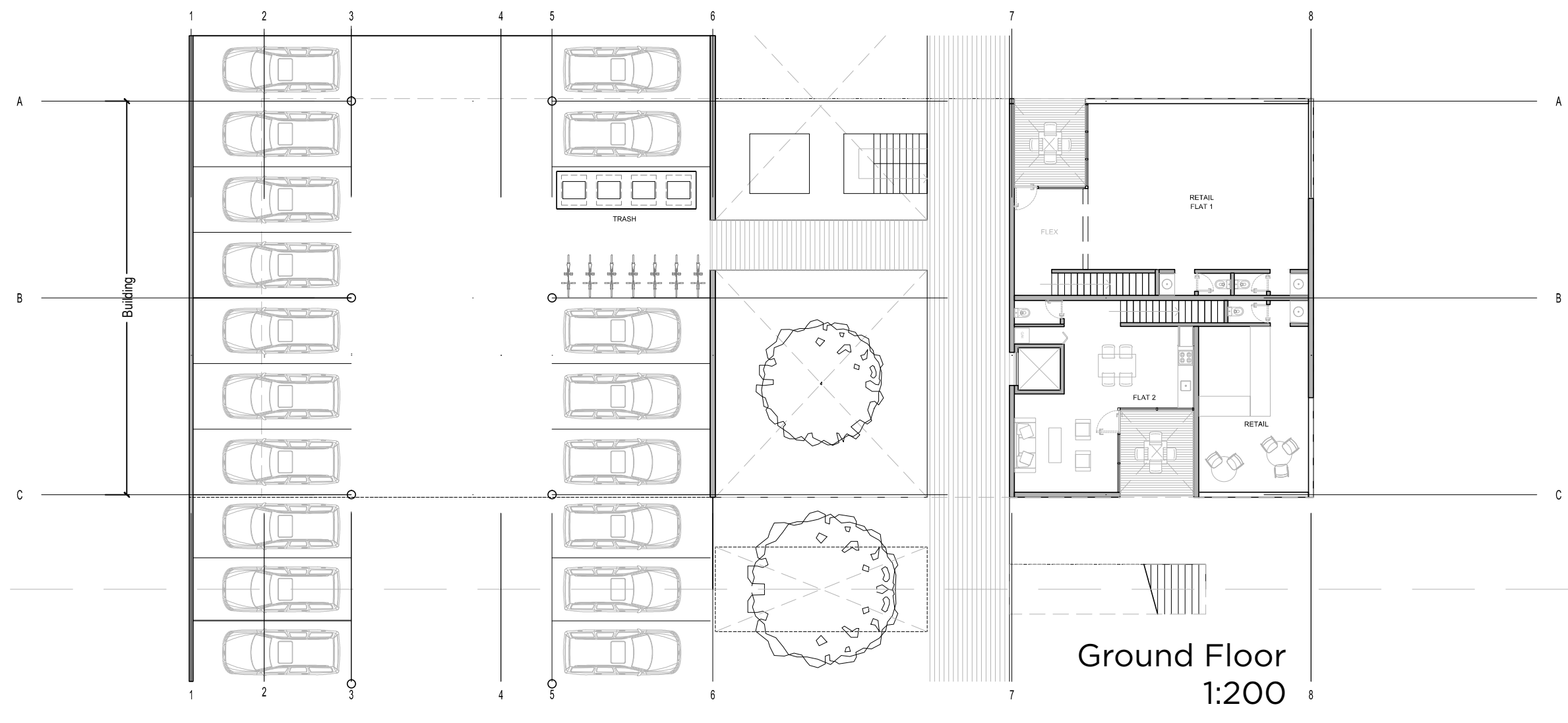
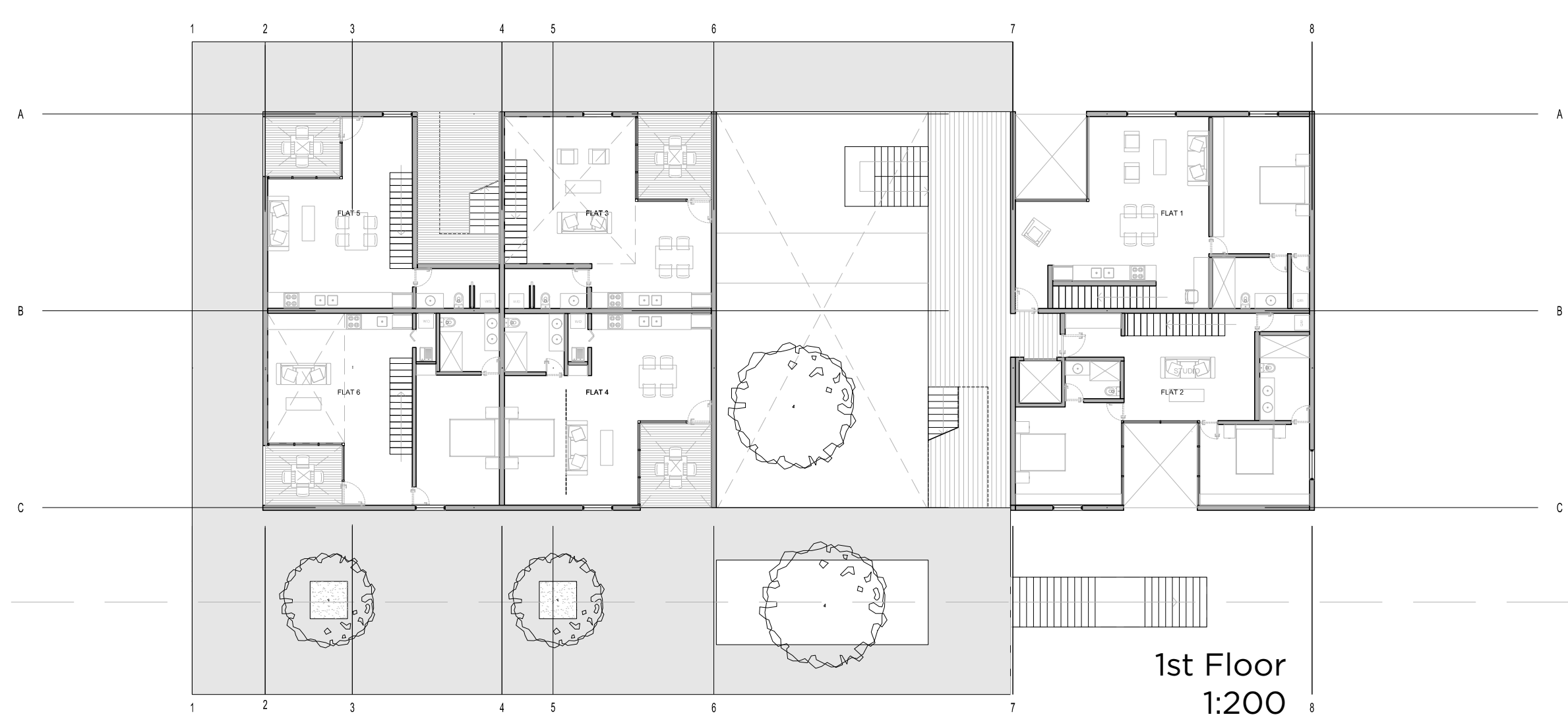
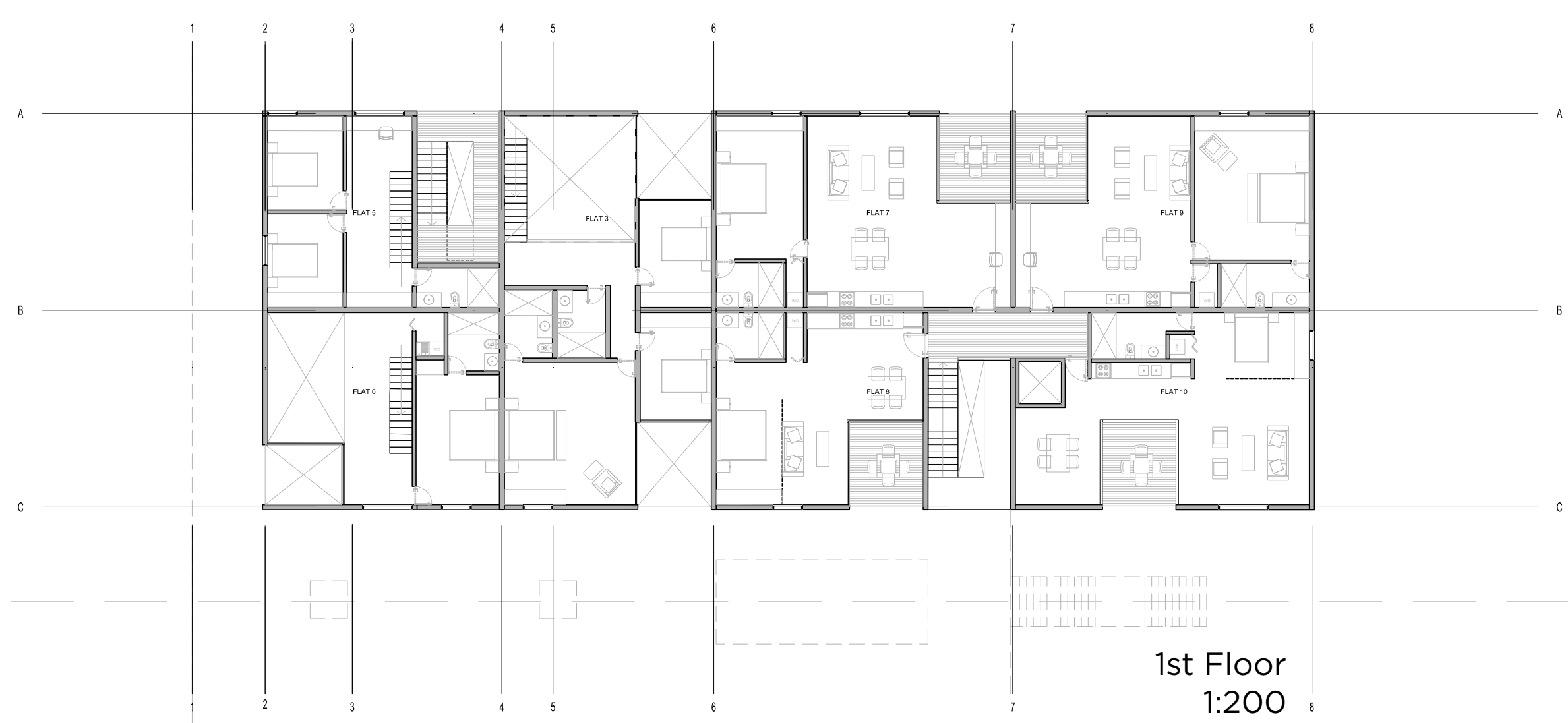
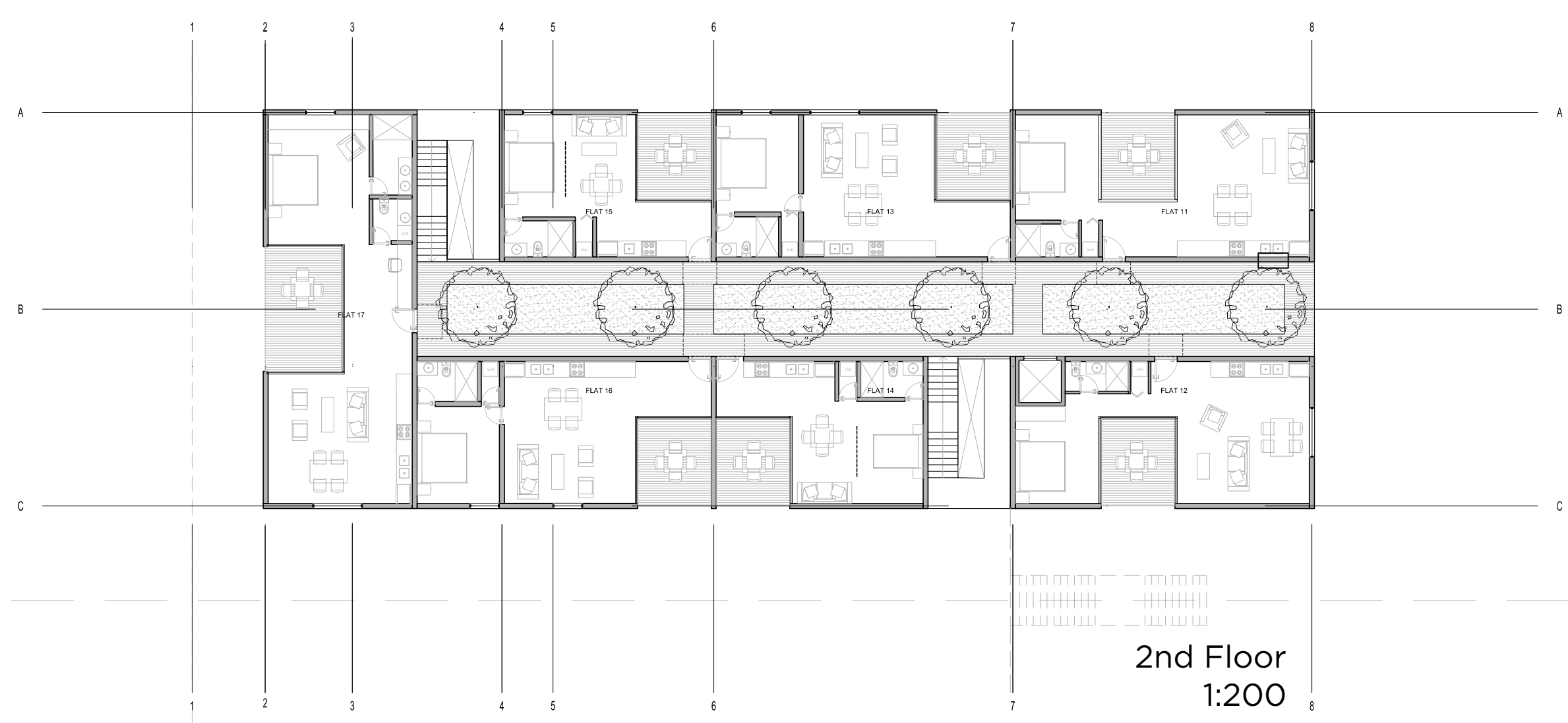
While the house can be understood to be the basic building block of the City, a City should not just be an aggregation of houses. Cities also need to provide "free" spaces to complement and enrich people's lives, offering a mix of different programs related to living, working, leisure, and services. The connections between different types of spaces, from public to private, should provoke social interaction where people of different ages and groups can freely engage and are invited to interact. The notion of "free-spaces" as a primary connector is the foundation for our proposal of housing and its relationship to the City. We envision a vibrant neighborhood where people move freely and the car is no longer a protagonist.

The court-based "Vecindad" housing typology found throughout downtown Mexico City inspired our solution to provide collective housing within horizontal city blocks. A central patio (court) serves the dual roles of community space and connector to the individual housing types around it. This typology offers residents a space for interaction with the city as well as a means to provide a filter between public life and the intimacy of the house. Four "vecindades", or open court levels, are situated within the block. The courts overlap in both the north-south and east-west directions, creating a collective block matrix that allows for different access levels for different users. All four courts are connected to the sky and allow for vegetation to occur on five levels of the project.

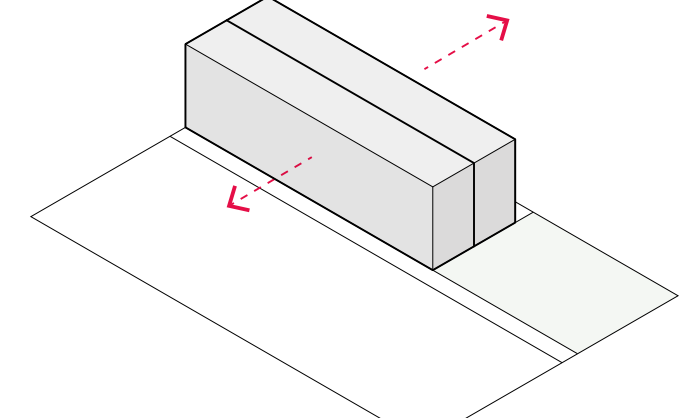
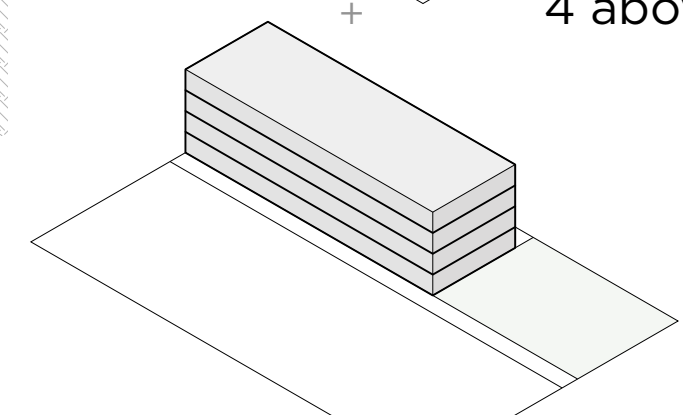
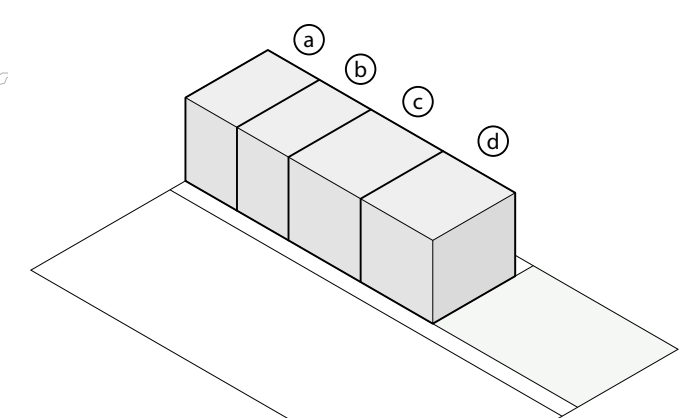
Every house in our proposal has an exterior room, which serves as transition space from court and entrance to the house, while providing for natural ventilation and lighting to all living spaces. Vegetation in the courts and exterior rooms connects all of the houses to nature while providing degrees of privacy.

Context Awareness
Connection with natureLinear park
(Court 1)Project block
Respecting
neighbor's heightSemi-public space
(Court 2)Semi-private space
(Court 3)Two -building
blocksThat can be
replicatedAdapting them
to the site's
preexistenciesCreating
non-linear pathsCourtyard
Façade

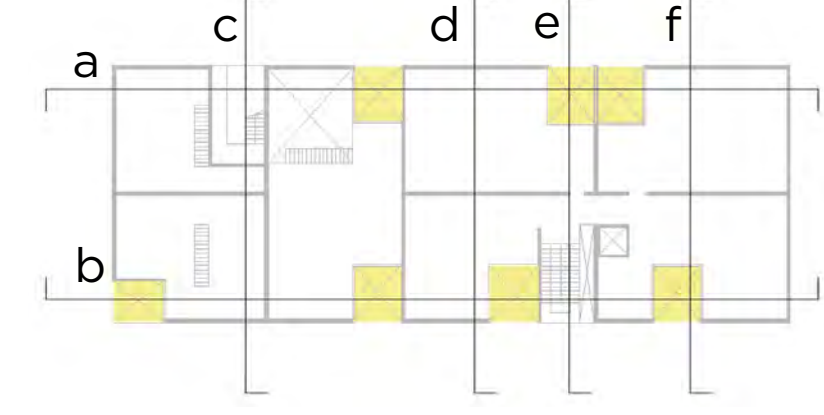
BLOCK



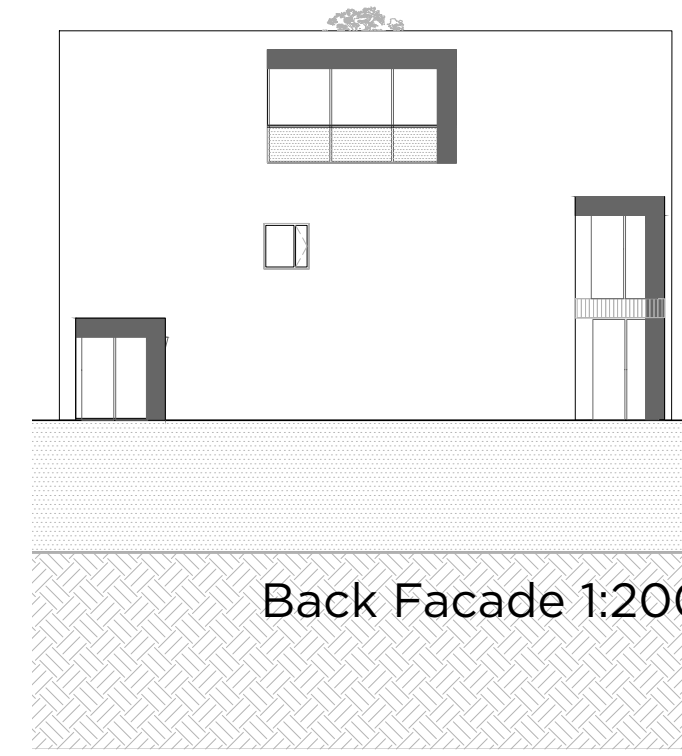
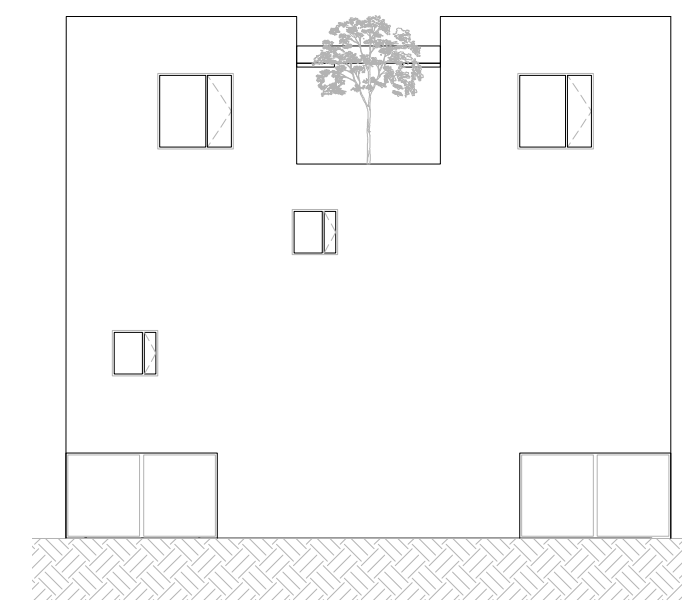
Divided into 4 modules
To create different typologies
according to specific necessities

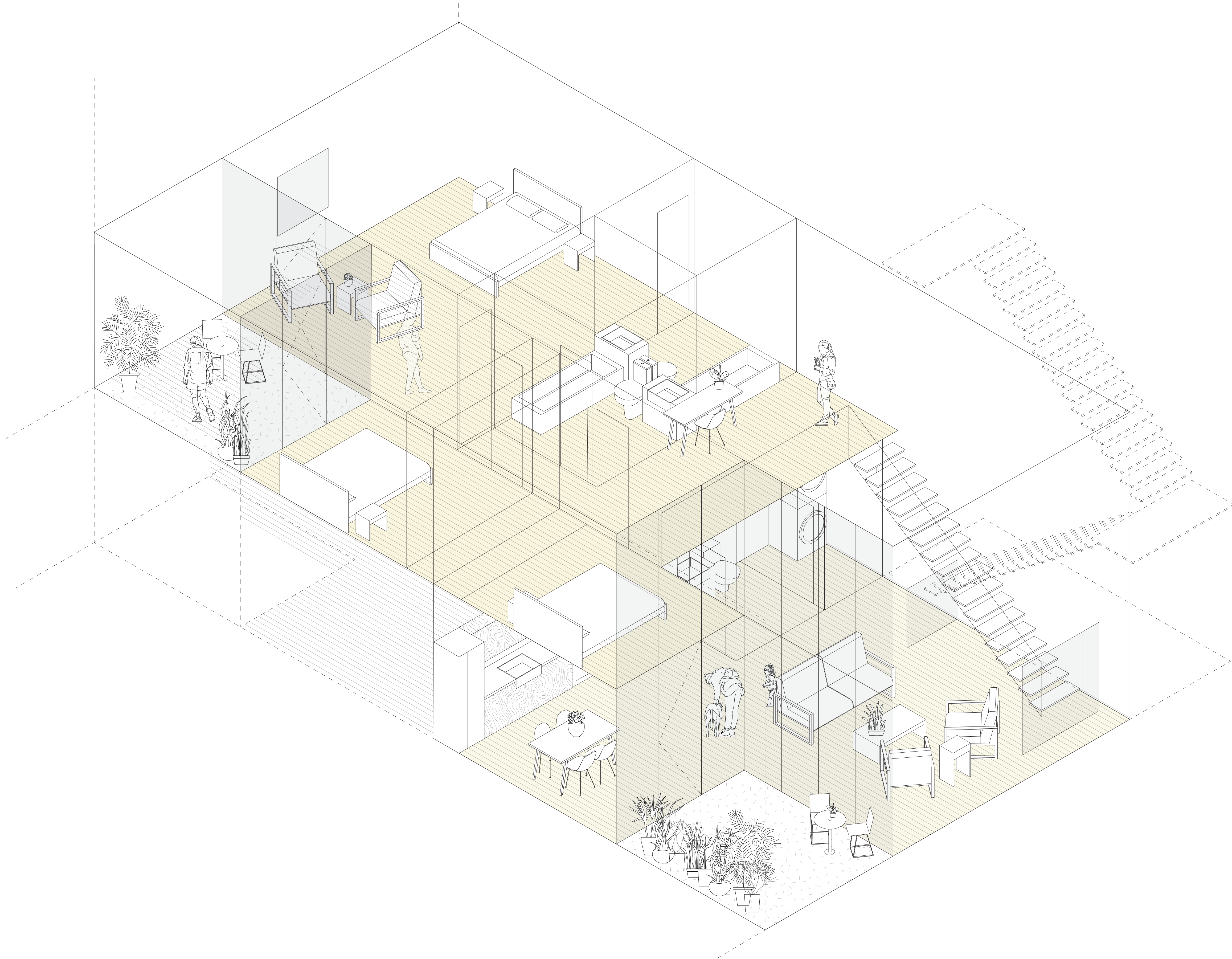


Divided in half to seize views and
offer different orientation conditions



Section Plan

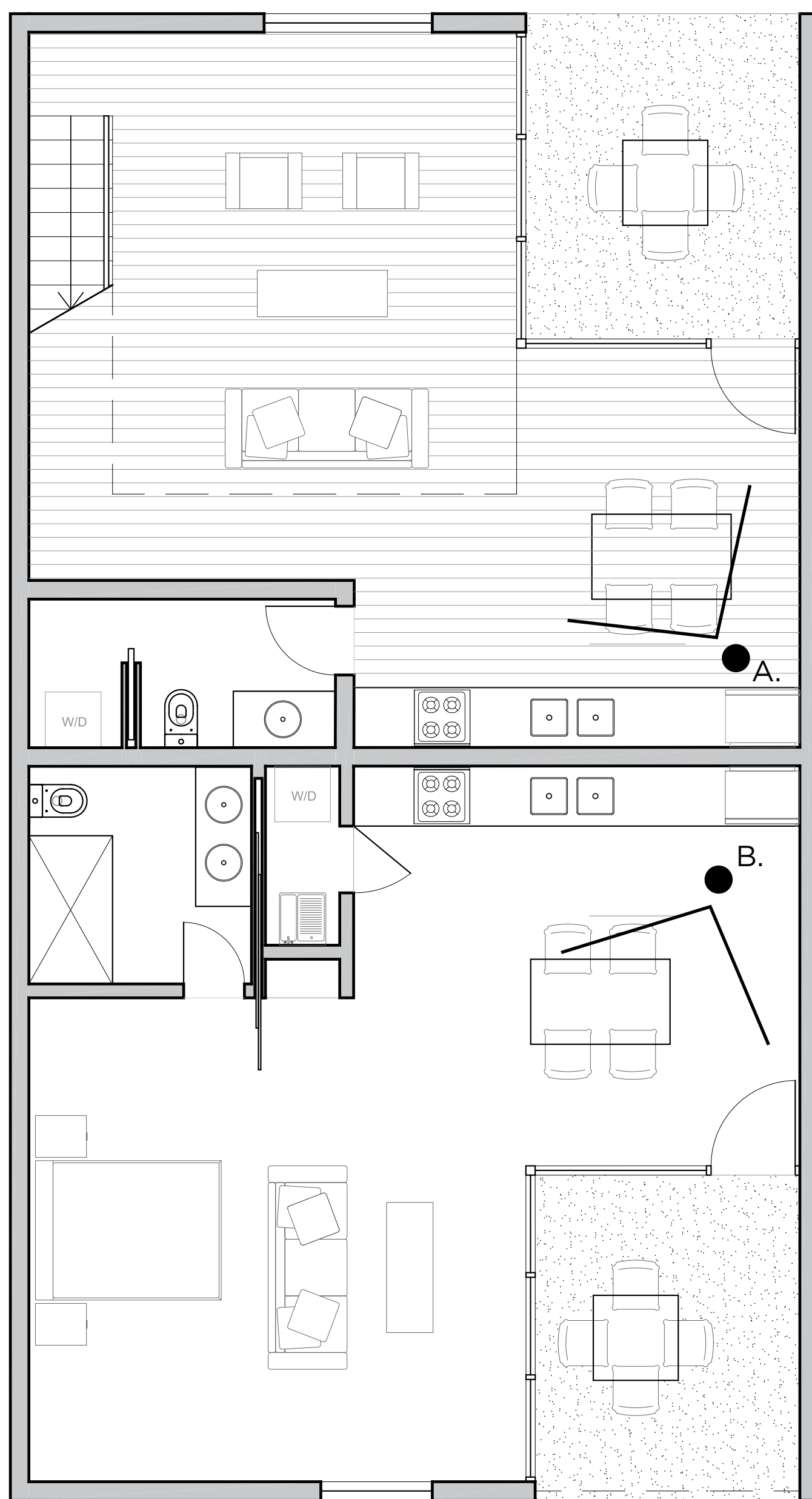




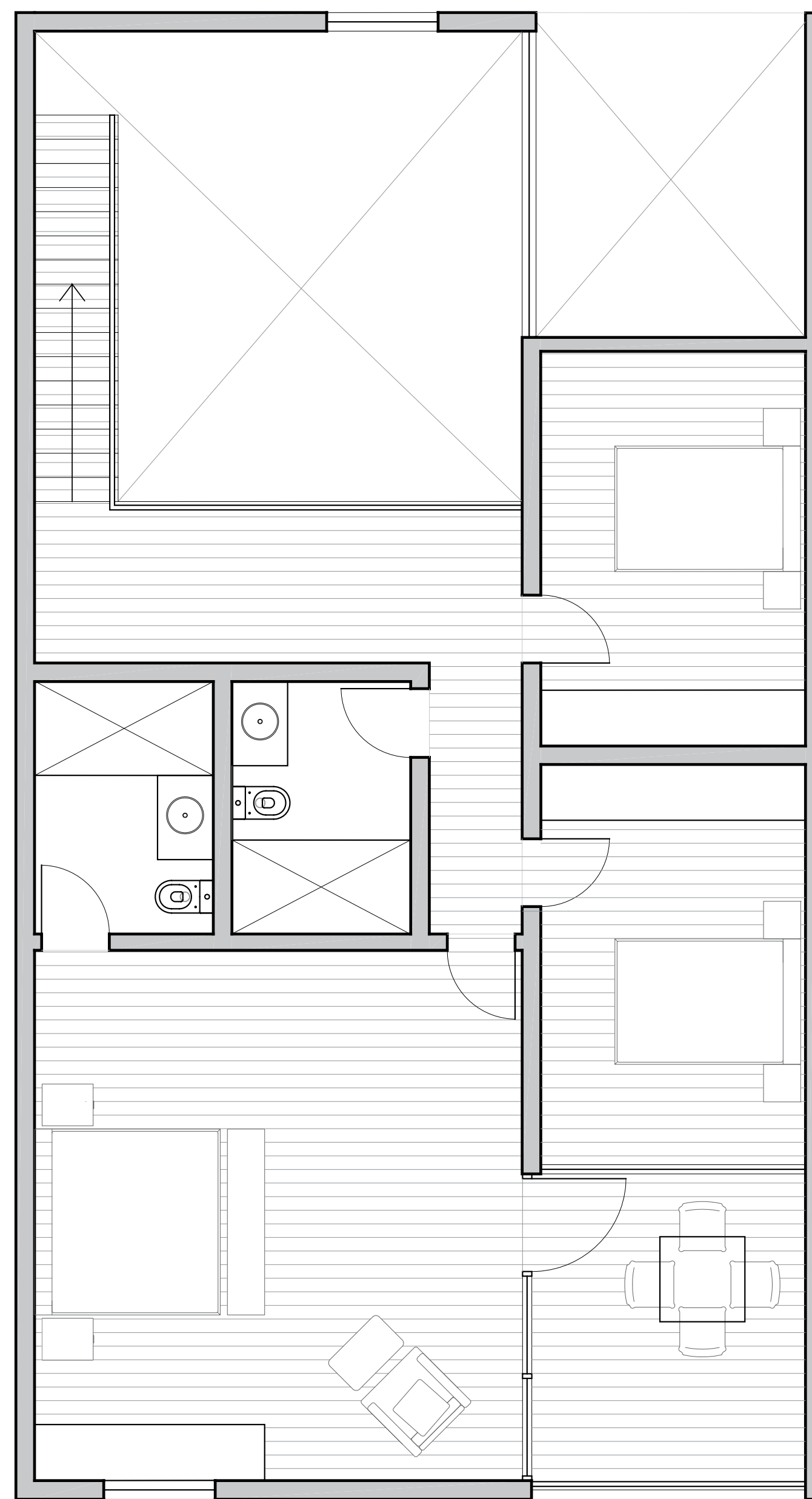
A. Three Bedroom House



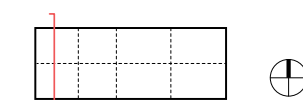
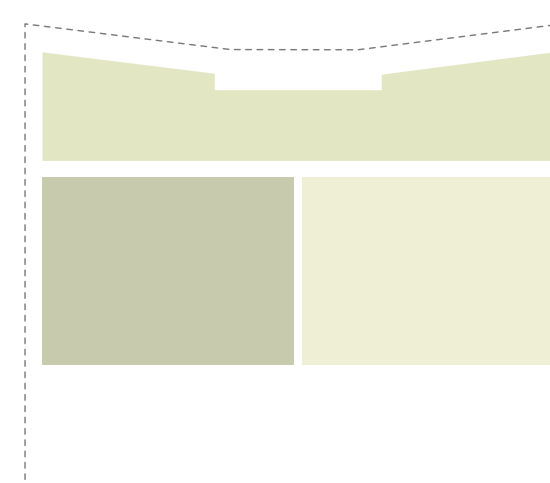
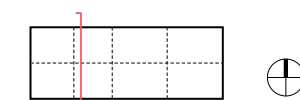
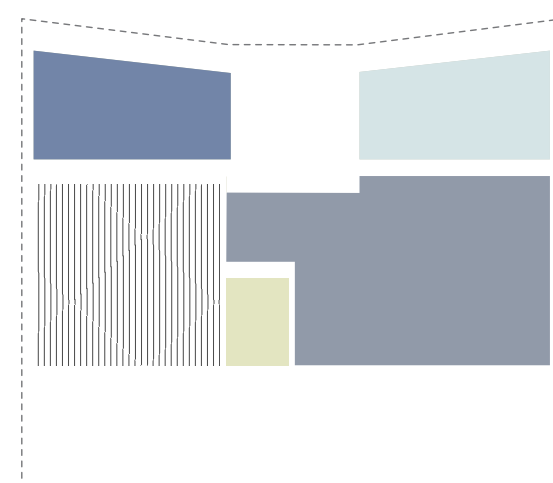
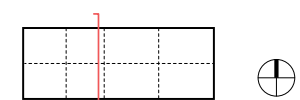
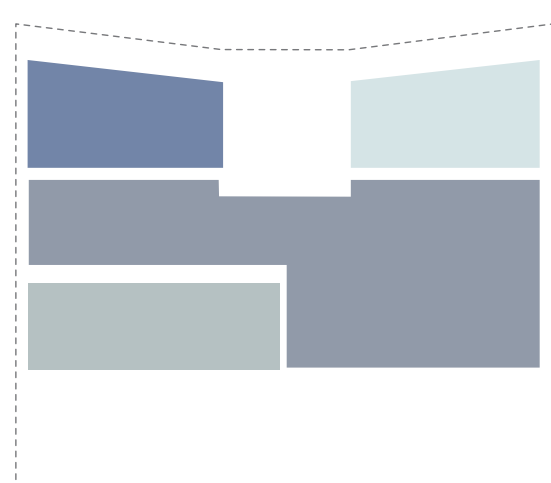
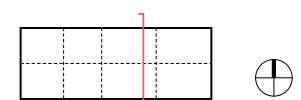
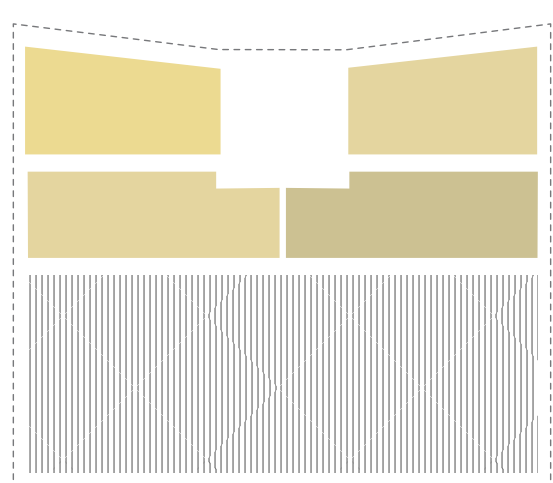
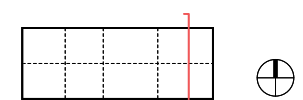
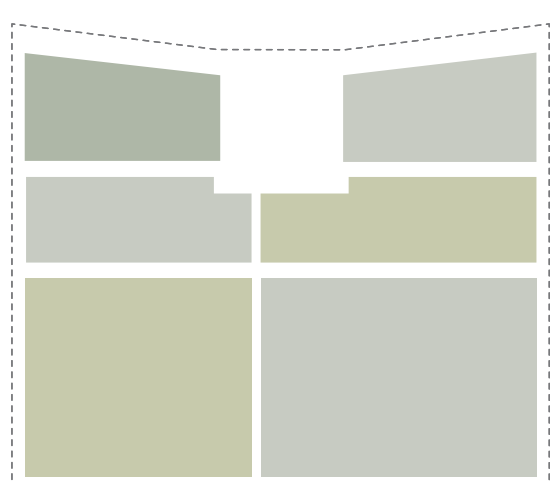
B. Studio House

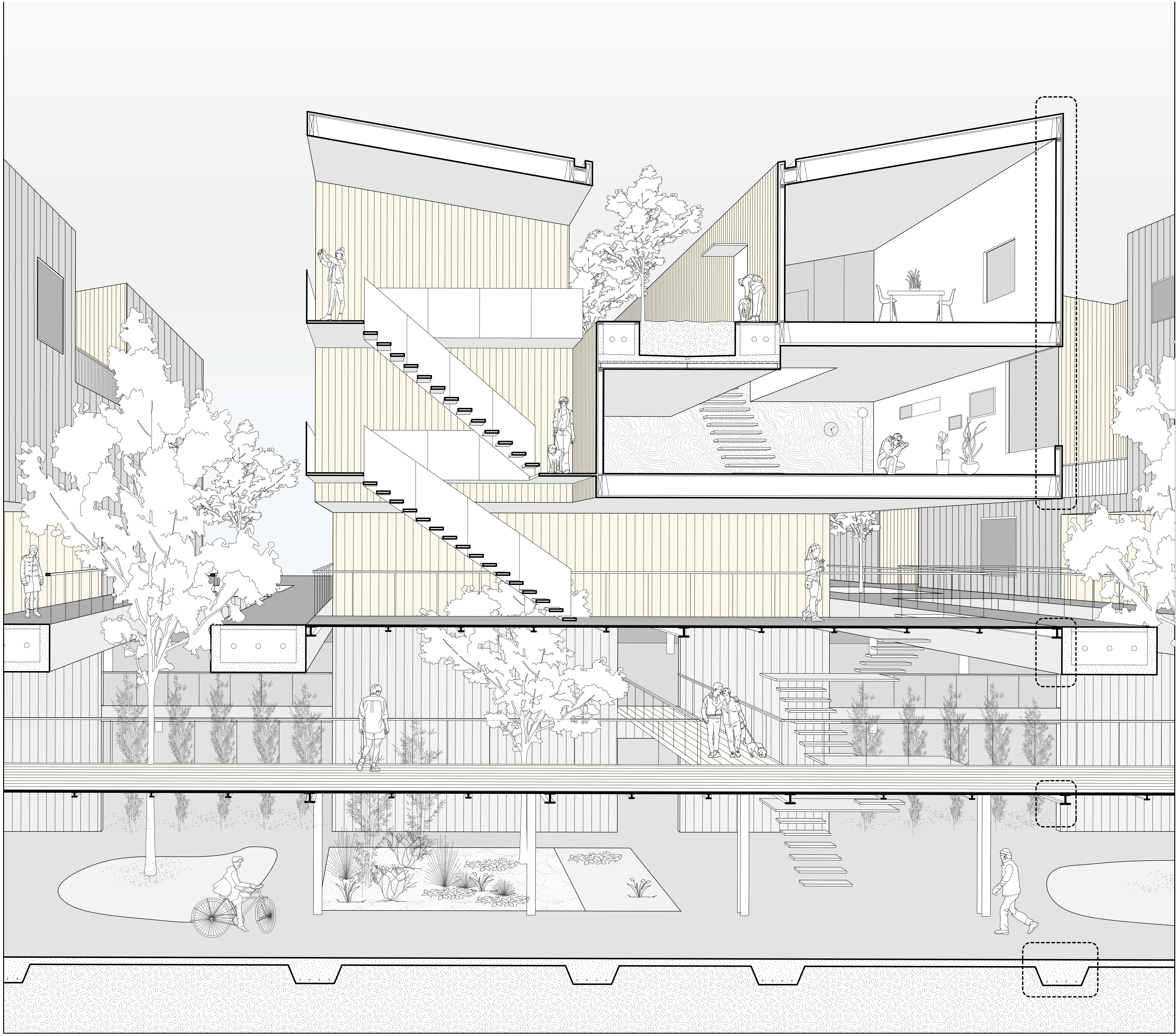


Three Bedroom House at Level 1

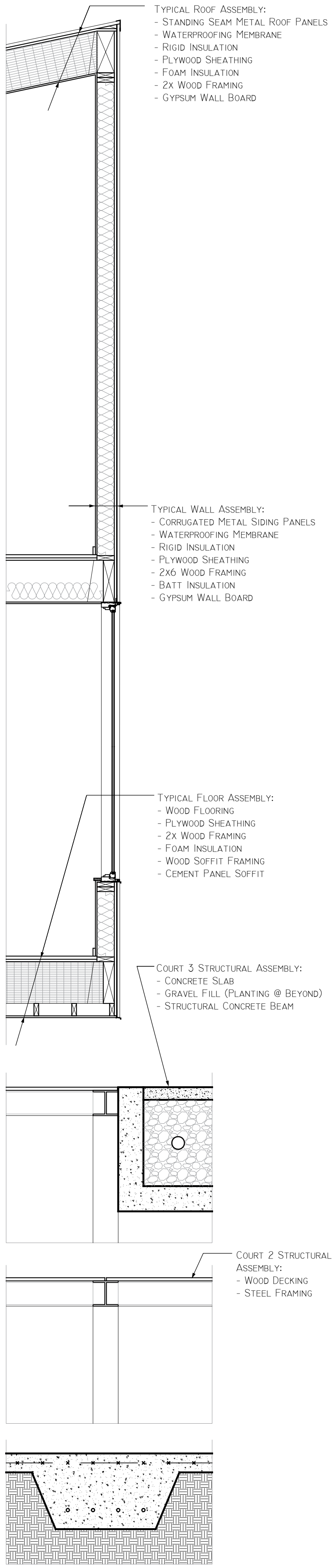


Three Bedroom House at Level 2





Section Perspective



Wall Section
Scale 1/2" = 1'-0"



Interior Courtyard



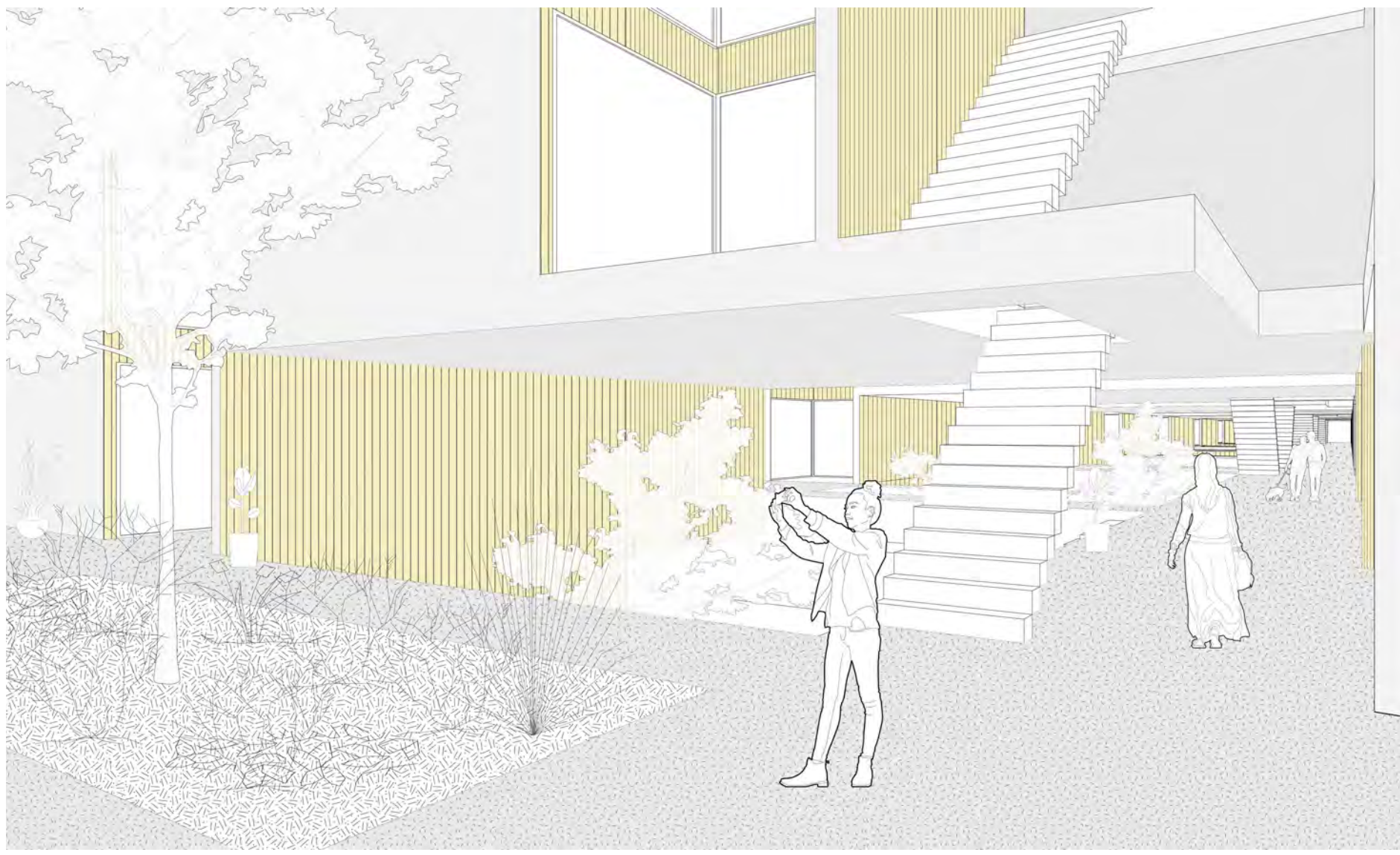
Central Public Space



Private Third Floor Patio



Central Public Space



Covered Public Space



House Interior